

CENTRAL AFRICAN REPUBLIC



Overview

Introduction	1
Savanna	2
Forest	3
Safari Rates	4



"A truly amazing life experience."
Berry Bridges

INTRODUCTION

The C.A.R. is broken into two extreme ecosystems, the Rain Forest and the Savanna, and offers discriminating hunters a wide variety of very unique species.

At Aouk-Sangha Safaris we pride ourselves as undoubtedly the top outfitter in the C.A.R. today. With over 20 years experience in Central Africa, we continue to guide hunters successfully in their quest for the magnificent Lord Derby's or Giant Eland, the elusive western Bongo and a host of other game.



EB Shawvers with magnificent 52 inch Eland

Some outfitters offer Giant Eland and Bongo on the same hunt where their Savanna concessions overlap with fingers of the Rain Forest, these hunts more often than not, do not produce high success rates or superior trophy quality. Rather than trying to combine our Bongo and Eland hunts, we concentrate on hunting Giant Eland, Western Roan, Savanna Buffalo and other species in our northern Savanna concession on the Aouk River. Likewise, we focus our Bongo, Dwarf Forest Buffalo, Sitatunga, Giant Forest Hog and the duiker species in our Rain Forest concession on the Sangha River.



Adventure
UNLIMITED

Telephone: 361-852-0537
Fax: 361-852-1766
Email: safaris@trip.net
Website: www.AUsafari.com



SAVANNAH SAFARIS ON THE AOUK RIVER

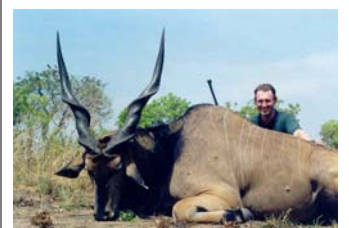
Our Savanna hunts are hosted from the end of December through March in our hunting concessions stretching along the Aouk and Djangara rivers in northern CAR, the Aouk river forming the international boundary between CAR and Chad.

The habitat consists of guinea woodland savanna, interspersed with grassy plains and riverine thickets along the major rivers and streams. Although hunting the Giant Eland can be very hard work, we have developed a tremendous network of hunting roads which enables us to cut their tracks in a grid system. This system is extremely beneficial to the elderly hunters by allowing us to follow the Giant Eland by vehicle, using GPS and radios. When nearing the animal the vehicle is abandoned and the team pursues on foot for the final stalk. This, combined with a healthy population of Giant Eland in our concessions, has been the formula for our clients outstanding success of the recent years. If you can shoot straight you will get your Giant Eland.

During the course of your hunt you will encounter some of the other animals on offer in our Savanna areas, such as Western Roan, North Western Buffalo, Lellwel's Hartebeest, Western Kob and the smaller game. Later afternoons are normally spent hunting these animals, unless you are following Eland.

Our safari camps are first rate and observers are always welcome.

Main camp consists of brick bungalows fitted with flush toilets, washbasins, showers (hot and cold water 24 hours a day), overhead ceiling fans and double beds draped with mosquito nets. Power is supplied by diesel generator and



FOREST SAFARIS ON THE SANGHA RIVER

Our Forest hunts are hosted from the end of April through July, in our hunting concession situated in the dense Rain Forest region of Bayanga in the south most tip of the Central African Republic. This area lies between the Republic of Congo and Cameroon and forms a part of the Congo Basin. The habitat consists of dense high canopy rain forest, with streams, marshes and salt licks. The climate during this time of the year, although humid, is tolerant as you will experience regular rain showers and thunder storms.

As our concession is flanked by two National Parks, Nkoki in the south and Dzangha Sangha in the north, combined with an extensive network of roads from past logging operations. Our success rate on Bongo hunts are the highest in CAR today.

We employ Pigmies and dogs as the principal means of hunting Bongo. This is surely the only method to get a good Bongo, as your guide can assess the animals sex, maturity and trophy size. This makes for a very exciting hunt, but seeing your pigmy trackers at work following a big Bongo in the near dark forest, will leave you as a hunter with an everlasting respect of these small people's unrivaled skill as the best trackers in the world. If you can walk 3 to 5 km you should have no problem obtaining a trophy bongo.

Also on offer in this area are the Dwarf Forest buffalo, Forest Sitatunga, Giant Forest Hog and numerous Duiker species. Some of these animals can be hunted from machans (raised platforms) around the clearings during the late evening and early morning. The Dwarf Buffalo is one of the most challenging animals to hunt and requires lots of patience and skill on the hunters part. Afternoons are spent hunting the duikers by having the pigmies imitate a distress call, or you can fish for Goliath Tigerfish on the River.

Side trips are regularly arranged for hunters and observers to visit the famous Dzanga Sangha Bai, often featured in National Geographic, to view Forest Ele-



Adventure Unlimited, Inc.

710 Buffalo St., Suite 807
Corpus Christi, TX 78401

Phone: 361-852-0537
Fax: 361-852-1766
E-mail: safaris@trip.net



Adventure
UNLIMITED



SAFARI RATES

Savannah (February through March) (all prices in US dollars)

	2 weeks	3 weeks
1 Client with 1 PH	37,000	41,000
Observer	3,500	5,250
Additional fees	6,000	6,000 (Charter, hunting permit, dip/pack)

Forest (April through June 13th)

	2 weeks	3 weeks
1 Client with 1 PH	29,000	34,000
Observer	3,500	5,250
Additional fees	5,250	5,250 (Charter, hunting permit, dip/pack)

SPECIES	AREA	US \$
Giant Eland	Savannah	4750
Buffalo (Central Savanna)	Savannah	900
Duiker (Red)	Savannah	350
Duiker (Western)	Savannah	250
Hartebeest (Lelwel's)	Savannah	800
Harnessed Bushbuck	Savannah	550
Bohor Reedbuck	Savannah	475
Western Kob	Savannah	750
Oribi	Savannah	250
Roan Antelope	Savannah	2,500
Warthog	Savannah	250
Bongo	Forest	4500
Yellow Backed Duiker	Forest	750
Blue Duiker	Forest	200
Peter's Duiker	Forest	350
Bay Duiker	Forest	350
Red River Hog	Forest	300
Giant Forest Hog	Forest	1,500
Sitatunga	Forest	1,750
Dwarf Forest Buffalo	Forest	1,750

Safari Fees Include:

- The service of professional hunter, trackers, skimmers, cooks and general camp staff.
- Fully equipped camp with daily laundry services.
- Food and drinks.
- Field preparation of trophies.

Safari Fees Do Not Include:

- Trophy fees as per list.
- Airfreight of trophies from Bangui to home city.
- Commercial Air travel. Hotel expenses if required in Banjui
- Visa Fees, Firearms and ammunition, Gratuities.